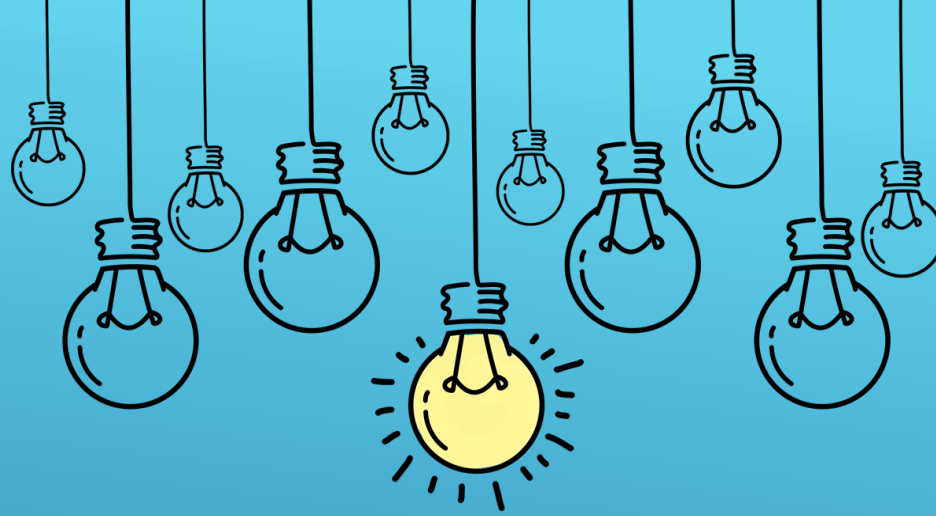


HIGH SCHOOL LEVEL  
ITS TIME TO ACT!!!

NOW, THAT YOU HAVE KNOWN  
SOMETHING ABOUT THE STATUS  
OF ASIAN ELEPHANTS, LETS FORM  
A TEAM AND TRY TO WORK ON  
SOME IMPORTANT QUESTIONS.



# TEAM WORK



# DREAM WORK

# makes the



0-10 minutes  
Form a group of 4  
students  
Take details of each  
students on a paper  
and choose one  
topic.



55-60 minutes  
Evaluation and  
selection of  
the winning  
team.



10- 30 minutes  
Make a presentation  
on the chosen topic.  
"Team work makes  
the dream work"



30- 55 minutes  
Each group has 5  
minutes to present  
the presentation.



Q) IF YOU WERE A FOREST MINISTER, HOW WOULD YOU HELP TO CONSERVE CAPTIVE ELEPHANTS IN NEPAL?

Q) DO YOU THINK USING ELEPHANTS FOR JUNGLE SAFARI IS THE RIGHT THING TO DO? IF YES/NO, GIVE US YOUR VIEW REGARDING THIS TOPIC.

Q) DO YOU KNOW WHAT DEFORESTATION IS? IF YES, CAN YOU GIVE US YOUR SUGGESTIONS ON HOW TO PROTECT NEPAL'S FOREST FROM DEFORESTATION?

Q) DO YOU THINK PROTECTING FOREST AND ELEPHANTS CAN ALSO PROTECTS OTHER WILD ANIMALS?

Q) IF YOU ARE TO VISIT CHITWAN NATIONAL PARK, WHAT KIND OF ACTIVITIES WOULD YOU LIKE TO DO THERE?

Q) NOW THAT YOU ARE FULLY AWARE ABOUT THE SITUATION OF ELEPHANTS, HOW WOULD YOU LIKE TO FLOW THE MESSAGE TO OTHERS TO AWARE THEM TOO!

Q) IF YOU WERE A FOREST MINISTER , HOW WOULD YOU HELP TO CONSERVE CAPTIVE ELEPHANTS IN NEPAL?

Q) DO YOU THINK USING ELEPHANTS FOR JUNGLE SAFARI IS THE RIGHT THING TO DO? IF YES/NO, GIVE US YOUR VIEW REGARDING THIS TOPIC.

Q) DO YOU KNOW WHAT DEFORESTATION IS? IF YES, CAN YOU GIVE US YOUR SUGGESTIONS ON HOW TO PROTECT NEPAL'S FOREST FROM DEFORESTATION?

Q) DO YOU THINK PROTECTING FOREST AND ELEPHANTS CAN ALSO PROTECTS OTHER WILD ANIMALS?

Q) IF YOU ARE TO VISIT CHITWAN NATIONAL PARK, WHAT KIND OF ACTIVITIES WOULD YOU LIKE TO DO THERE?

Q) NOW THAT YOU ARE FULLY AWARE ABOUT THE SITUATION OF ELEPHANTS, HOW WOULD YOU LIKE TO FLOW THE MESSAGE TO OTHERS TO AWARE THEM TOO!