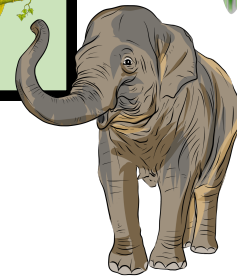


ASIAN ELEPHANT
Eva and Kali



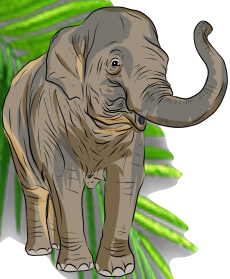
ASIAN ELEPHANT

Eva and Kali



Hello ! My name is Eva. That's all I know about me... I lost my memory. Can you help me remember my story ? We will play games, answer questions and learn a lot with help from a feathered friend named Kali. I hope soon that I will regain my memory. Thank you. So, let's go !

I don't know. My name is Eva and I can't remember anything else...



I don't know, I woke up all alone in the forest, I think I am lost, help me please.

Hey! Are you lost?

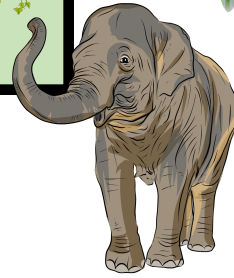


Nice to meet you Eva. My name is Kali. Why can't you remember?

I can help you; I am a very intelligent bird; I am a Parakeet.

Oh, thank you very much Kali.

WHO AM I ?



Kali, what am I ?

You are the largest animal who lives on Earth.

A whale ?

No. Whales are big but they live in the water, you are as big as a truck. You have a trunk and big ears.

Do you know what you are yet ?

Guess again using the scrambled letters below :

E _ _ _ _ _

L

A

E

N

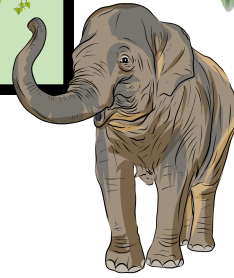
H

T

P



WHERE DO I COME FROM ?



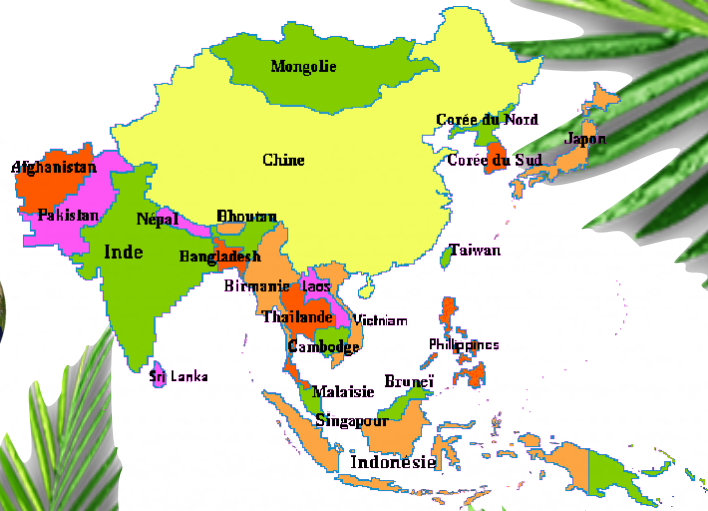
I'm an Elephant! But Kali, where do I live?

Where in Asia ?

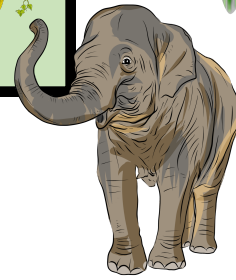
There are elephants that lives in Africa and Asia. Eva, you live in Asia. You are an Asian Elephant.

Elephants live in the jungles and forests of many countries in Asia. You are from Nepal.

Can you find Nepal on the map ?



WHO DO I LOOK LIKE ?



Kali, you said there are also elephants in Africa. Do we look the same?

You look similar but you have differences.

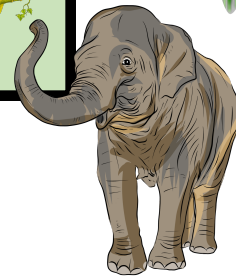
What differences?

You are smaller than your African cousins. You even have smaller ears and only male Asian elephants have big tusks. If you are a female, you probably have small tusks hidden under your lip.

Circle the differences.



WHO IS MY FAMILY ?



What is my family like?

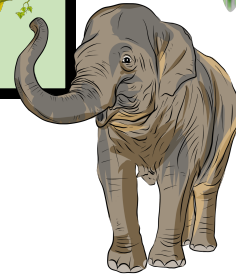
Your family is called a herd and in your family, there are many females and young elephants. The oldest is the leader of the group because she knows the most. Older males live alone.

So, I have a mommy?

Of course! and a grandmother! And many aunts and cousins that you love to cuddle with and play with your trunks. You can hear everything with your big ears and your trunk is like an extra arm.



WHAT DO I EAT ?



Kali, I'm hungry, what can I eat?

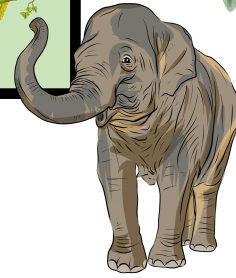
You are an herbivore, that's an animal who only eat grasses, leaves, branches, bark and also fruits that you find in the jungle. Like a vegetarian.

What do I drink?

Water! You use your trunk like a straw and suck the water in then you spit it back out into your mouth. You can even use you trunk like a snorkel when you go swimming.



WHAT DO I DO ?



You're talking a lot about the jungle.
What do I do there? Do I help?

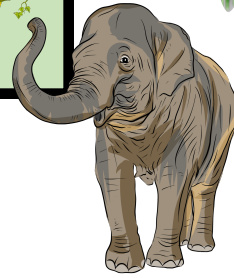
You help a lot! You're really big, so when you walk through the jungle you create paths for the smaller animals. You also help make rivers and tear up trees so the jungle can breathe. Even when you poop, you help the jungle.

REALLY?! My poop helps the jungle?
How?

When you eat grass or flowers, you swallow also swallow many seeds. When you poop, those seeds come out and are planted. You help the jungle to grow.



DANGER ?



Eva, I have one last very important thing to tell you. You are an animal that is in danger ?

What kind of danger ?

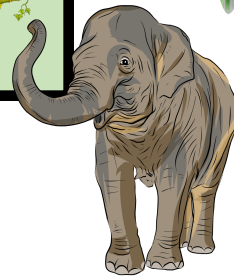
There are animals that walks on two legs. They are people and are dangerous to you.

Why ?

Humans cut down too many trees in the jungle, which is your home. If they find you in their rice fields, they can even hurt you. Do take good care of yourself, Eva !



STAND UP 4 ELEPHANT



Kali are all people dangerous ?

Of course not. For example, here in Nepal there are many nice people.

Like who ?

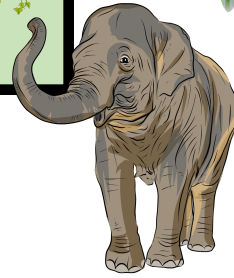
There's a special group you'd like called « STAND UP 4 ELEPHANTS »

I like their name. What do they do ?

They help elephants that are not free like you to have a better life and keep them safe from dangerous people.



STAND UP 4 ELEPHANTS



Look Kali, elephants !

Yes Eva, that's your family ! Go tell them everything you have learned about yourself and the kind of animal you are.

Thank you very much. Can we stay friends ?

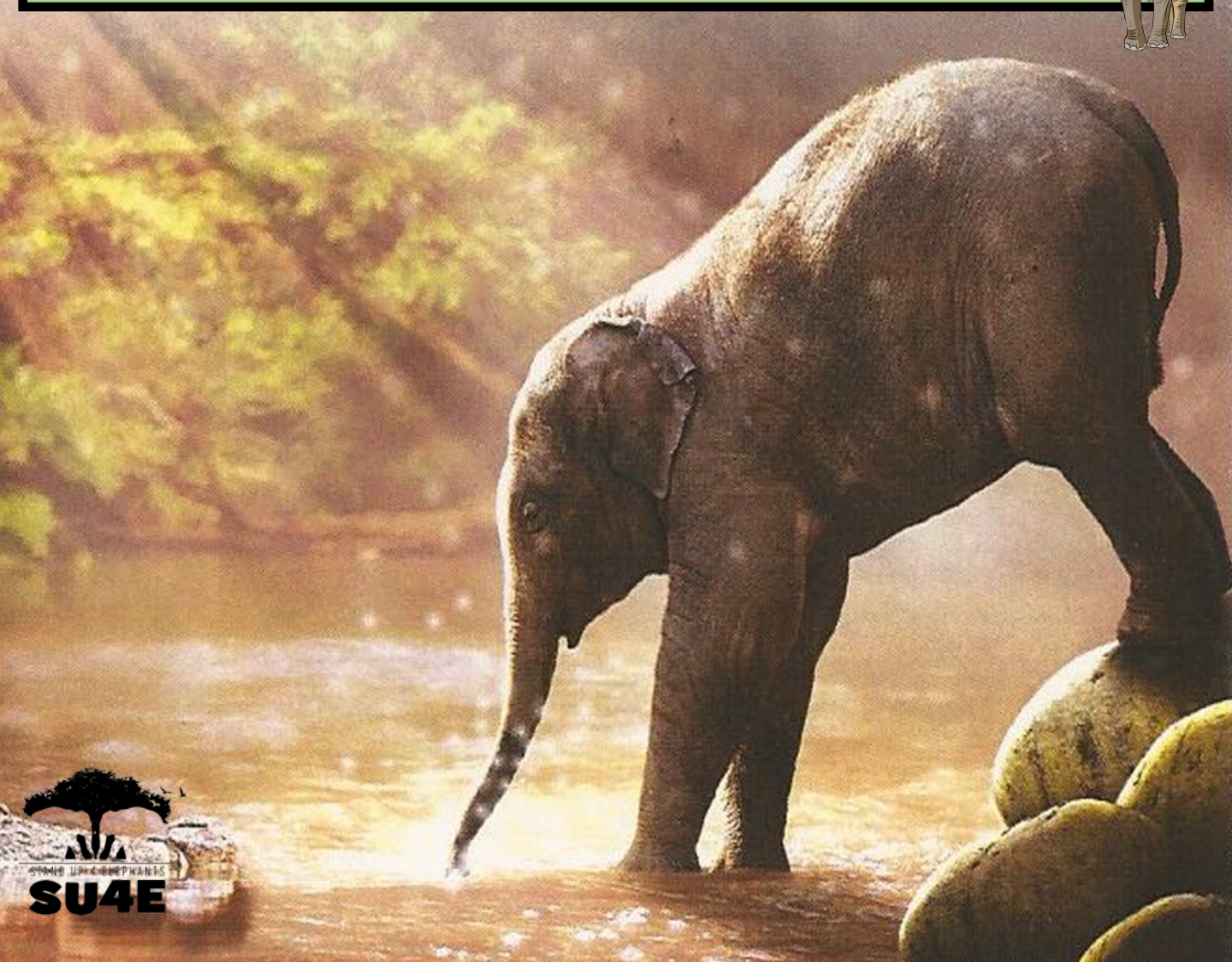
Of course we can. I will come back to play with you again soon. Goodbye Eva.

See you soon Kali.

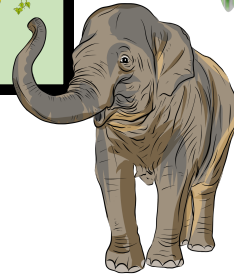




**THANKS TO YOU AND KALI,
EVA HAS FOUND HER HOME.**



LET'S PLAY TOGETHER



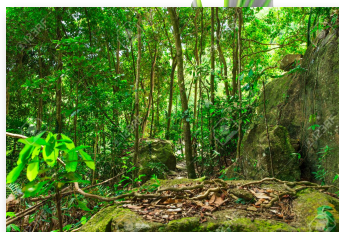
Answer true or false :

The leader of a herd of elephants is male : _____

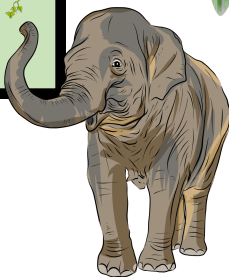
Elephants use their trunk to drink water : _____

Elephants eat meat : _____

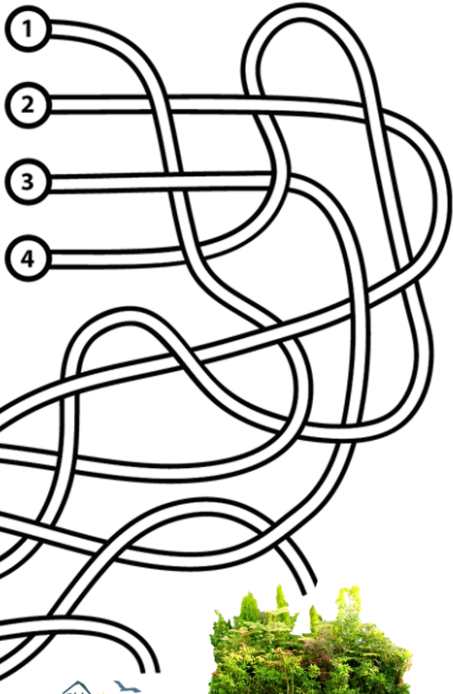
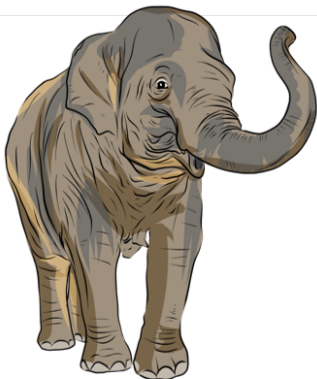
Circle the right pictures :



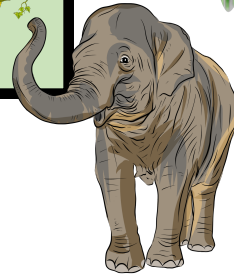
LET'S PLAY TOGETHER



Help Eva find her home :



LET'S PLAY TOGETHER



Help Eva find these colors :

