



# नमस्ते साथी Hallo Freunde

Sixty years of building trust with Nepal - I see this as a huge opportunity. Today, Nepal projects itself into a future of political stability and inclusive growth. And for Germany, the success stories of the past are the seeds for innovative cooperation in this new era.

Ambassador Roland Schäfer



**Nepal has always enjoyed a very special and important relationship with Germany.** Right from the beginning of this relationship, German Development Cooperation (GDC) has contributed significantly to the improvement of the livelihood of the Nepali people.

**The three main implementing agencies of GDC – GIZ (German Agency for International Cooperation), KfW Development Bank and PTB (German Metrology Institute)** have been playing a key role providing financial and technical assistance. Their actions are guided by the outcome of intergovernmental negotiations, in tune with Nepal's goals. Health, energy, sustainable economic development, earthquake recovery and local governance are the current priorities.

**As we move forward towards achieving the Sustainable Development Goals** adopting a more holistic, coherent and integrated approach in the spirit of the Agenda 2030, Germany and Nepal will further deepen the development cooperation partnership based on our shared values: democracy, individual freedom and a just and equitable society that is also sensitive to environment conservation and climate change.

60 years of Nepali-German bilateral relations – past success stories to build on



## Economic Development

Since 1983

The spectrum ranges from building institutions and improving livelihoods in earlier days to promoting value chains, access to finance and improved quality infrastructures in recent times.

- Industrial Enterprise Development Institute created in 1996
- Small Farmers' Agriculture Cooperative System developed
- Nepal Trade Integration Strategy revised and value chains promoted
- Income generated for a large number of landless and marginalised groups in the honey value chain and riverbed farming
- Government supported in reducing tax compliance costs for small and medium-sized businesses by using digital solutions



## Health

Since 1994

GDC has been a long-term supporter for health system strengthening and the improvement of reproductive health, including family planning commodity supplies and maternal and child care.

GDC also strengthened health infrastructure and provided equipment particularly in Western Nepal.

- Essential drug list introduced, essential drugs and family planning commodities financed
- National Social Health Insurance scheme established and rolled out in more than half of the country
- Health management information system enhanced and e-reporting introduced
- Concept of outsourcing of maintenance of medical equipment in designated public health facilities introduced nationwide

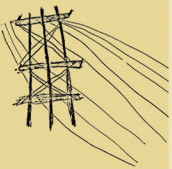


## Energy

Since 1970

GDC has been supporting the generation, transmission and distribution of hydroelectricity and the promotion of energy efficiency and renewable energy technologies in rural areas.

- Marsyangdi and Middle-Marsyangdi Hydro Electric Projects constructed (140 MW)
- More than 300,000 household biogas plants and 150,000 Solar Home Systems installed
- 10 MW of off-grid small hydro projects constructed
- Guiding national strategies for energy efficiency developed



### GERMAN EMBASSY KATHMANDU: HANDS ON

Since many decades the German Embassy financially supports small-scale projects of NGOs or local communities aiming at poverty alleviation at the grassroots level.



# Highlights of 60 Years

## Local Development

Since 1967

Local governance reform and institutional development were supported for more than four decades.

The current focus lies in improving local service delivery in the new federal structure through capacity development support to municipalities including inter-municipal learning and coaching.

- Bhaktapur Development Project (1974 -1986)
- Town Development Fund established in 1989
- Municipalities supported in town planning, revenue improvement, social mobilization etc.
- Green Roads and Dhading Besi Bridge built



### CITIZENS AND NGOS

A wide range of German NGOs and their local partners contribute to the work of GDC in Nepal.

This includes private social organizations, political foundations as well as people to people exchange (e.g. academic exchange, senior expert service, returning experts).

## Earthquake Recovery

Since 2015

Special funds of € 35 million for immediate relief, transition and recovery were provided by the German Government.

- Health facilities and electricity infrastructure reconstructed with a community-based approach
- 2,500 biogas damaged plants rehabilitated
- Vocational training benefiting 2,000 people including 1,045 women



### NOT BILATERAL ALONE...

Germany is a member of the European Union and actively contributes to its long lasting cooperation with Nepal.

Within the UN system and other multilateral institutions, Germany significantly contributes to the budget and steering mechanisms. Partnerships with other states serve to enhance efficiency and coherence.

## Support to Peace Process

Since 2006

Support started immediately after signing of the Comprehensive Peace Agreement in 2006.

- Maoist combatants gathered in cantonments and integrated according to the comprehensive peace agreement
- National Peace Trust Fund supported through financial and technical cooperation



## Regional Cooperation

Since 1986

Nepal benefits from regional programmes of GDC. The International Centre for Integrated Mountain Development (ICIMOD) is supported since 1986 and SAARC for decades in improving trade and quality infrastructure.

- ICIMOD's organizational development at the science policy interface shaped
- Methodology for ICIMOD's transboundary landscape programme developed
- Projects under German International Climate Initiative (IKI) implemented since 2009

## Partner voices

“ Since the past 25 years, Germany remains an effective partner in bringing about reforms in the Health Sector in Nepal. ”



Pushpa Chaudhary  
Secretary  
Ministry of Health and  
Population

“ Support of German Development Cooperation has been instrumental to promote inclusive economic growth in the selected districts in Nepal. Further, the support has been considered equally valuable in developing the Cooperative Action Plan for the implementation of the Cooperative Policy, 2012, and in developing the Cooperative and Poverty Related Management Information System (CoPOMIS), which is now in the process of implementation for the development and good governance of the cooperative sector all over the country. ”



Raghu Ram Bista  
Joint Secretary  
Ministry of Land Management,  
Cooperative and Poverty  
Alleviation

“ Nepali people are grateful to the German Development Cooperation for its continuous support in the sectors of generation, transmission, distribution and energy efficiency programmes in Nepal over the past decades. Marsyangdi and Middle Marsyangdi hydro projects are landmarks in our cooperation. These plants, even today, constitute about 21% of the total generation capacity of NEA. ”



Kulman Ghising  
Managing Director  
Nepal Electricity Authority